

US Army Corps of Engineers
 San Francisco District
 450 Golden Gate Ave
 San Francisco, CA 94102

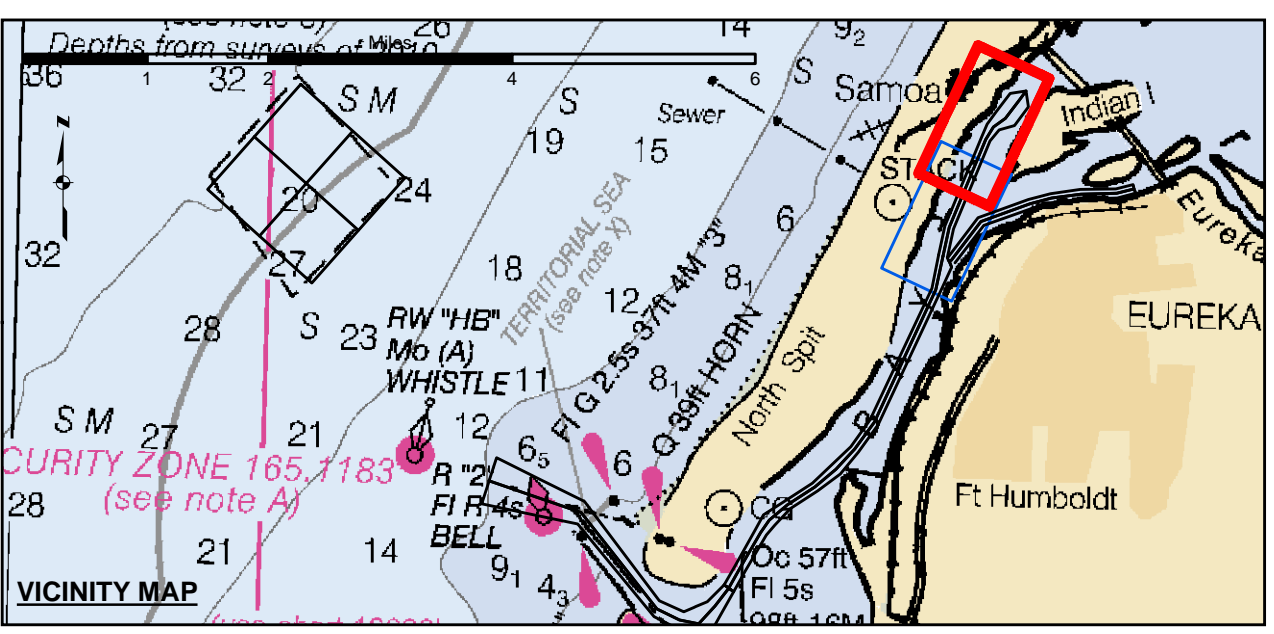
DISCLAIMER
 The United States Government furnishes this data for informational purposes only. It is not intended for use in any other manner than the intended purpose. The user is responsible for the results of any application of the data for other than the intended purpose. The user is responsible for the results of any application of the data for other than the intended purpose. The user is responsible for the results of any application of the data for other than the intended purpose.

Prepared Under the Direction of	Chart Date
LT COLONEL J. RAYFIELD	Feb 15, 2019
Submittal	Designed by:
Hydro Survey Team Leader	PDT
Recommended	Checked by:
Chief, Hydro Survey Section	PDT
Approved	Drawn by:
Chief, Construction Branch	PDT

CALIFORNIA
 HUMBOLDT COUNTY
 HUMBOLDT BAY
 SAMOA CHANNEL
 CONDITION SURVEY
 06-11 FEBRUARY 2019

Sheet Reference Number
 1 of 2

Angle Point	Easting	Northing
18	5956047.79	2183225.93
19	5957638.19	2187056.43
20	5957683.58	218747.53
21	5958881.79	2188978.43
22	5959681.79	2188378.43
23	5959081.79	2187578.43
24	5958421.69	2187381.23
25	5958007.99	2186903.83
26	5958425.99	2183093.63
27	5958236.79	2183159.43
C18	5957823.09	2186979.43
C19	5958152.59	2187513.43
C20	5958681.79	2187878.43
C21	5959581.79	2189078.43
C23		

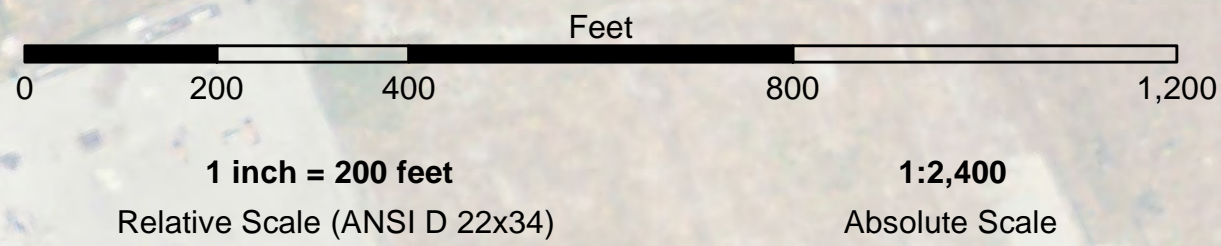


Federal Navigation Channel	Beacon, General	Contours
Shoaling Area	Obstruction Point	-38
Placement Area	Navigation Buoy	-37
Anchorage Area	Navigation Buoy	-36
Wreck Area	Shoalest Sounding*	-35
Submerged Wreck		-34
Angle Point		

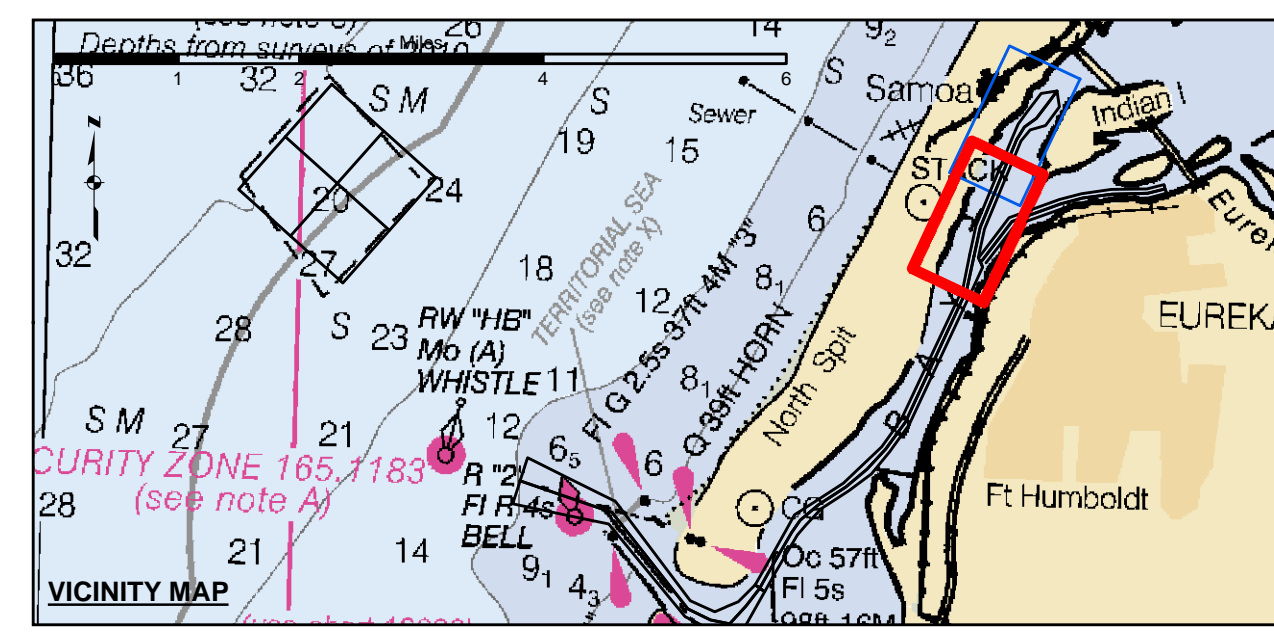
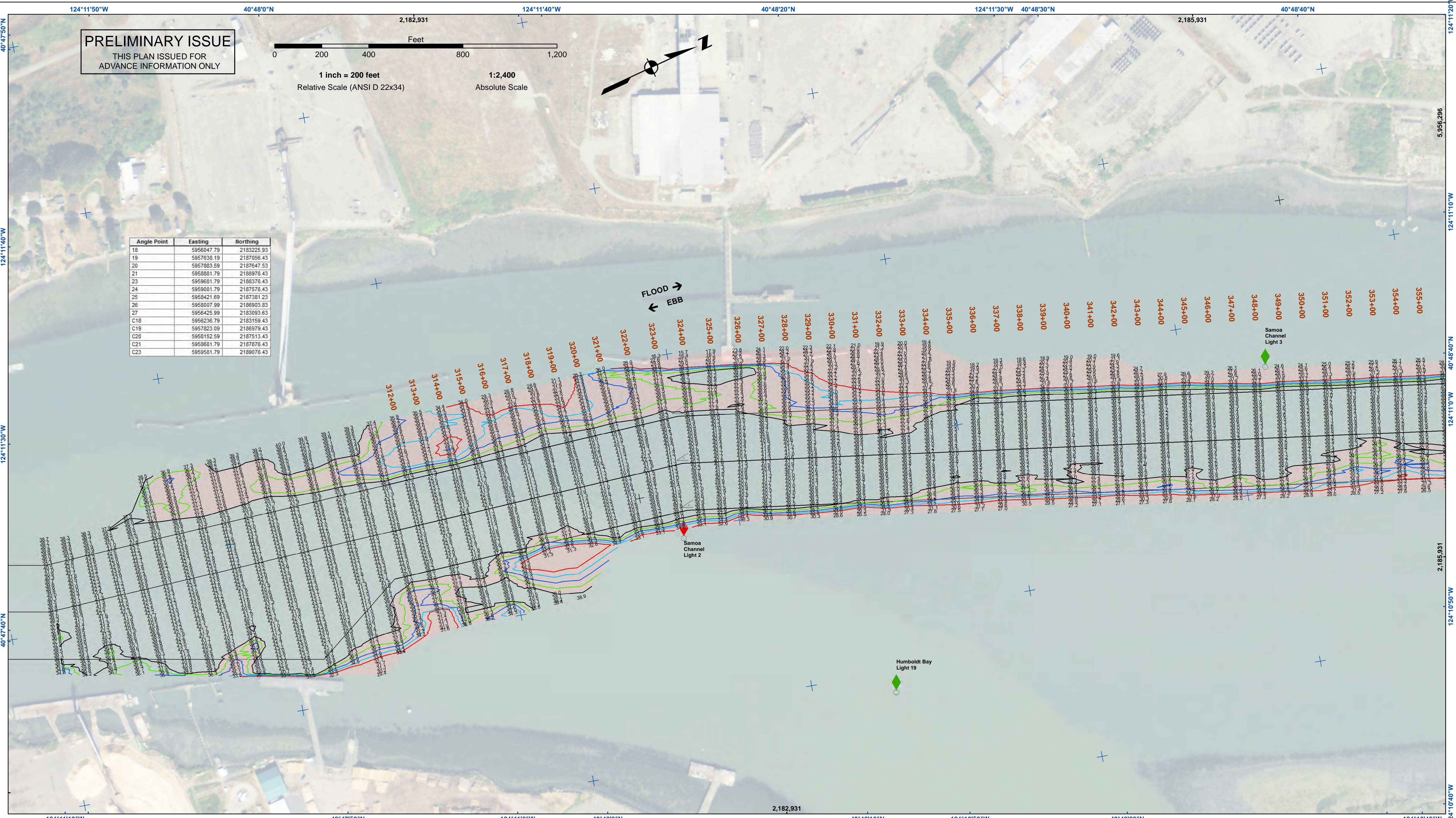
NOTES:
 DRAWINGS NOT TO BE USED AS NAVIGATION. ONLY CHANNEL CONDITION AT DATE OF SURVEY. THE LOCATION OF ALL NAVIGATION AIDS ARE BASED ON INFORMATION PROVIDED BY THE U.S. COAST GUARD. BUOY LOCATION REPRESENT THE POSITION OF THE SINKER ONLY.
 SURVEYED BY THE CORPS OF ENGINEERS.
 SOUNDINGS WERE TAKEN BY FATHOMETER AND ARE SHOWN TO THE NEAREST TENTHS OF A FOOT.
 SOUNDINGS ARE BASED ON THE DATUM OF MEAN LOWER LOW WATER AT THE LOCALITY.

PROJECT DEPTHS ARE AS FOLLOWS:
 BAR & ENTRANCE CHANNEL = 48 FEET
 NORTH BAY, SAMOA TO MILE 5.0 & = 38 FEET
 EUREKA CHANNEL, FIELDS LANDING CHANNEL & MILE 5.0 TO "N" STREET = 26 FEET
 SOUNDINGS ARE BASED ON TIDE GAUGES REFERENCED TO U.S.C. & G.S. BENCH MARKS AS FOLLOWS:
 EUREKA & SOMOA CHANNELS - B.M. NO. 4 (1906) ELEV. 33.81' M.L.L.W.
 ENTRANCE & NORTH BAY CHANNELS - B.M. NO. 9 (1937) ELEV. 16.35' M.L.L.W.
 FIELDS LANDING CHANNEL - B.M. NO. 5 (1925) ELEV. 8.52' M.L.L.W.

PRELIMINARY ISSUE
THIS PLAN ISSUED FOR
ADVANCE INFORMATION ONLY



Angle Point	Easting	Northing
18	5956047.79	2183225.93
19	5957636.19	2187056.43
20	5957883.59	2187647.53
21	5958881.79	2188978.43
23	5959681.79	2188378.43
24	5959081.79	2187578.43
25	5958421.69	2187381.23
26	5958007.99	2186903.83
27	5956425.99	2183093.63
C18	5956236.79	2183159.43
C19	5957823.09	2186979.43
C20	5958152.59	2187513.43
C21	5958681.79	2187878.43
C23	5959581.79	2189078.43



Federal Navigation Channel	Beacon, General	Contours
Shoaling Area	Obstruction Point	-38
Placement Area	Navigation Buoy	-37
Anchorage Area	Navigation Buoy	-36
Wreck Area	Shoalest Sounding*	-35
Submerged Wreck		-34
Angle Point		

NOTES:
DRAWINGS NOT TO BE USED AS NAVIGATION. ONLY CHANNEL CONDITION AT DATE OF SURVEY. THE LOCATION OF ALL NAVIGATION AIDS ARE BASED ON INFORMATION PROVIDED BY THE U.S. COAST GUARD. BUOY LOCATION REPRESENT THE POSITION OF THE SINKER ONLY.
SURVEYED BY THE CORPS OF ENGINEERS.
SOUNDINGS WERE TAKEN BY FATHOMETER AND ARE SHOWN TO THE NEAREST TENTHS OF A FOOT.
SOUNDINGS ARE BASED ON THE DATUM OF MEAN LOWER LOW WATER AT THE LOCALITY.
PLANE GRID AND COORDINATES ARE BASED ON THE STATE OF CALIFORNIA COORDINATE SYSTEM, LAMBERT CONFORMAL PROJECTION, ZONE 1 NAD 83, CALIFORNIA, AS DESCRIBED IN SPECIAL PUBLICATION NO. 235, PUBLISHED BY THE NATIONAL OCEAN SURVEY.

PROJECT DEPTHS ARE AS FOLLOWS:
BAR & ENTRANCE CHANNEL = 48 FEET
NORTH BAY, SAMOA TO MILE 5.0 & = 38 FEET
EUREKA CHANNEL, FIELDS LANDING CHANNEL & MILE 5.0 TO "N" STREET = 26 FEET
1:00 INDICATES THE NUMBER AND BEGINNING OF A LINE OF SOUNDINGS.
SOUNDINGS ARE BASED ON TIDE GAUGES REFERENCED TO U.S.C. & G.S. BENCH MARKS AS FOLLOWS:
EUREKA & SOMOA CHANNELS - B.M. NO. 4 (1906) ELEV. 33.81' M.L.L.W.
ENTRANCE & NORTH BAY CHANNELS - B.M. NO. 9 (1937) ELEV. 16.35' M.L.L.W.
FIELDS LANDING CHANNEL - B.M. NO. 5 (1925) ELEV. 8.52' M.L.L.W.

US Army Corps of Engineers
San Francisco District
450 Golden Gate Ave
San Francisco, CA 94102

DISCLAIMER
The United States Government furnishes this data for informational purposes only. The data represents the results of data collected by the United States Government. The data is not intended for navigation. The user is responsible for the results of any use of this data for other than its intended purpose. The user is responsible for the results of any use of this data for other than its intended purpose. The user is responsible for the results of any use of this data for other than its intended purpose.

Prepared Under the Direction of TRAVIS J. RAYFIELD LT COLONEL, C.E., DISTRICT ENGINEER	Chart Date: Feb 15, 2019
Submitted: Hydro Survey Team Leader	Designed by: PDT
Recommended: Chief, Hydro Survey Section	Checked by: PDT
Approved: Chief, Construction Branch	Drawn by: PDT

HUMBOLDT COUNTY CALIFORNIA
**HUMBOLDT BAY
SAMOA CHANNEL
CONDITION SURVEY
06-11 FEBRUARY 2019**

**Sheet
Reference
Number
2 of 2**